

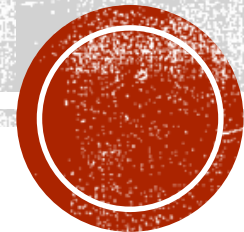


ISU COMMITTEE

By

Michael Agbamoro

National Board Chairman



- The NA approves the establishment of an ISU Committee.
- ISU Committees are formed to perform specific tasks or projects.
- The NA gives the Committee instructions on how to approach the task at hand.
- Committees are allowed to promote their own cases to the NA.
- Committees will present their work at the NA.



ISU COMMITTEE



POLITICAL COMMITTEE

- I. The Political Committee (PC) will be elected at the National Assembly.
- II. The Political Committee consists of up to 8 members.
- III. The PC is responsible for running political campaigns and coordinating the reaction to the Government State Budget in cooperation with the EC and the NB.
- IV. The Political Committee must meet at least six times per year.
- V. The Political committee will have 2 meetings in Oslo. 1 in Autumn and 1 in Spring.



EDITORIAL COMMITTEE

Positions

- Chief Editor
- Assistant editor
- Marketing manager
- Maximum of five board members
- The editorial committee will have 2 meetings in Oslo. 1 in Autumn and 1 in Spring.



EDITORIAL COMMITTEE RESPONSIBILITIES

- Responsible for production of at least semesterly magazine publication.
- Involved in budgeting and strategic planning of magazines.
- Identify and contact potential advertisement partners/clients.
- The board shall be answerable to the National board.





Election Committee

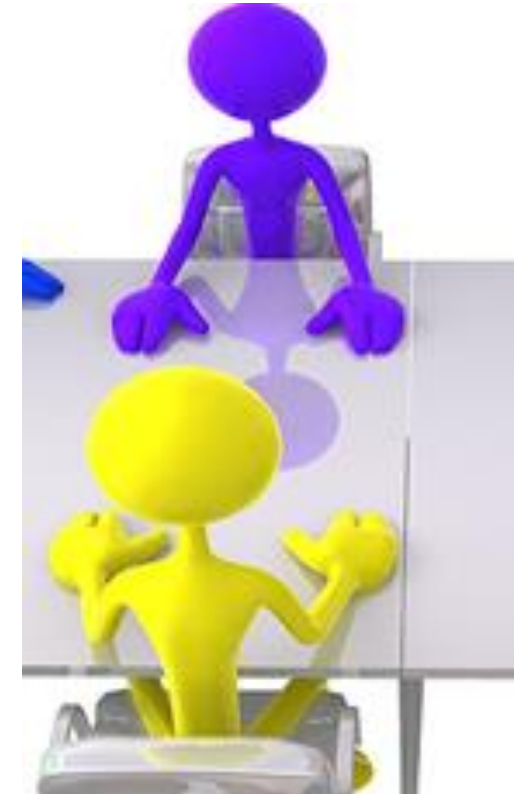
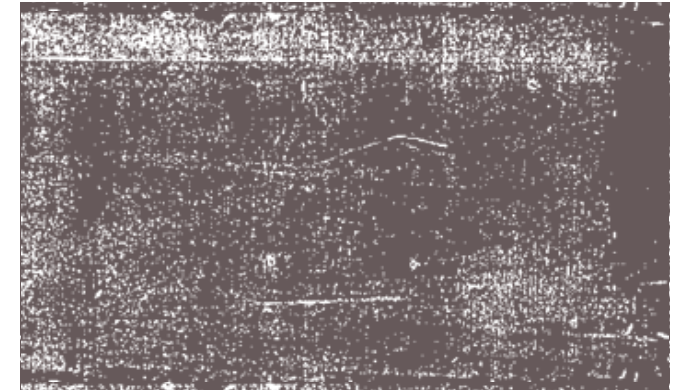


- I. The Elections Committee shall consist of three total members.
- II. No person can serve on the Elections Committee that is running for a national level board or committee position.
- III. The Elections Committee is responsible for interviewing and recruiting candidates for positions in any of the boards or committees.
- IV. If there is a vacancy in the Elections Committee then the National Board will elect the final spot.
- V. The election committee may set a deadline for applications for an election.
- VI. The elections committee will have 2 meetings in the spring semester.



CONSTITUTION COMMITTEE

- A Constitution Committee (CC) can be proposed and determined by the National Assembly or at one of the Leadership Meetings.
- If Constitution Committee members vacate their position, replacement members can be chosen by an LM or the NA.



COMPOSITION OF THE CONSTITUTION COMMITTEE:

- A total of 5 to 7 members, which includes:
- No more than 2 National Board members,
- No less than 3 Local Branch representatives, which are chosen by simple majority vote
- Two open places which can be for anyone with an interest in ISU Norway, which are selected by the remainder of the committee, for example:
- Current or past board members of Local Branches,
- Former Executive Board members,
- Members of partner organizations - anyone: Norwegian or international.





OPERATION AND ROLE OF THE CONSTITUTION COMMITTEE:

I. The leader of the Constitution Committee will be chosen from within and by the Constitution Committee, by a simple majority vote. The leader cannot be an Executive Board member and must have at least been a previous member of ISU in whatever capacity.

II. The Leader of the Constitution Committee will have the responsibility to gather suggestions for changes from the National Board, Leadership Members, and at National Assembly meetings. The leader will place the suggestions in one document.

III. The committee makes its decision on the final document with a simple majority vote.

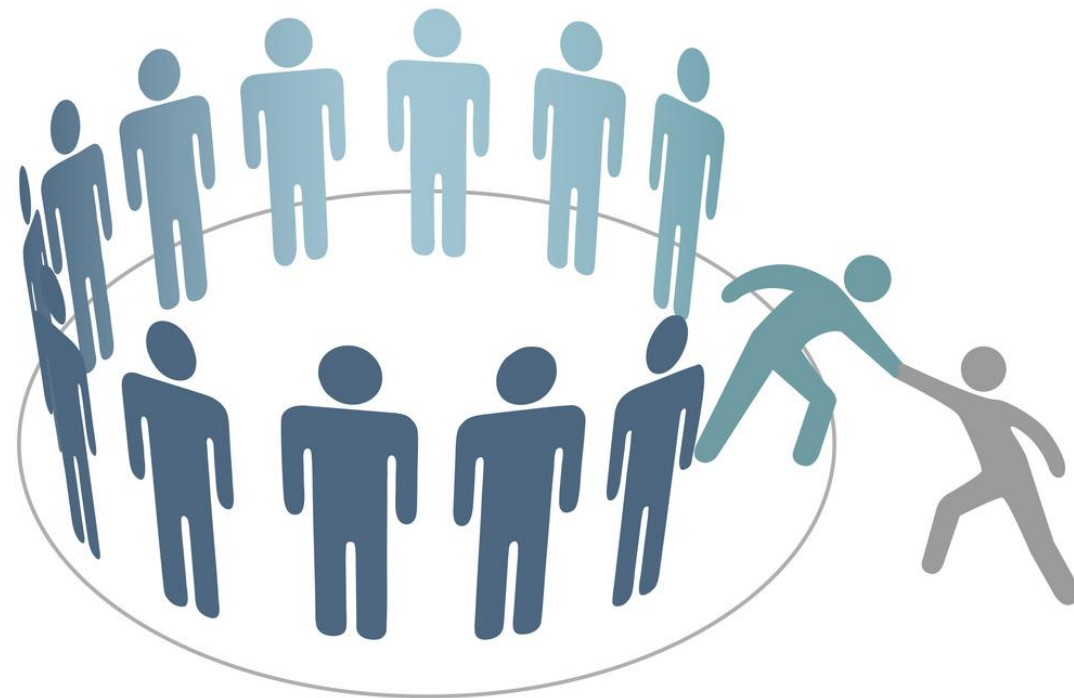
IV. Amendment proposals to the constitution will be sent to the National Board at least three weeks before the National Assembly.



GET INVOLVED!



Join a Committee



get involved.
join a committee.

Thank you

