

The National Union of Students in Norway



Founded 1936

www.nsu.no

Local student democracies

- NSU is a decentralized union.
- The local students democracies of NSU are autonomous.
- The local student democracies have representatives that work fulltime in student politics.



The National Union of
Students in Norway
Founded 1936



Studenttinget NTNU



The General assembly:

NSUs top level politically.

93 delegates from our member student democracies.

Once every year (april)

-Legislative body

Approves:

- Guidelines for the board and the EC.
- Budget, policy papers and platforms.

They elect the five students in the EC. and decide their plan of work.

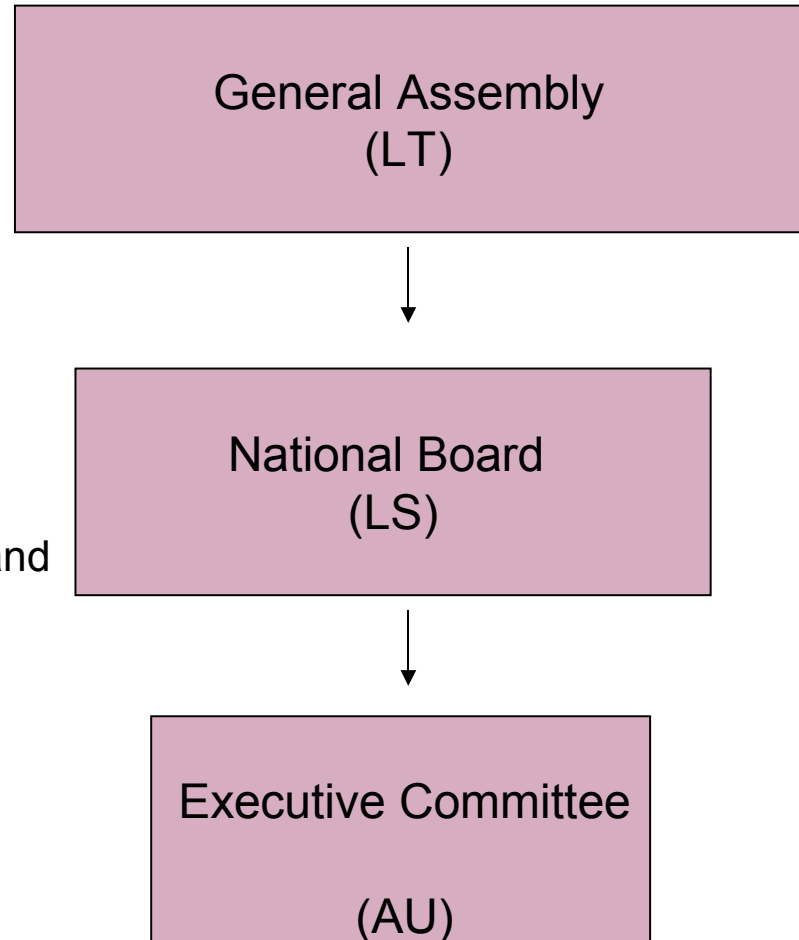
The National board:

They meet minimum five times a year.

- Decide policypapers and follow up the EC.

- Agree on budgets.

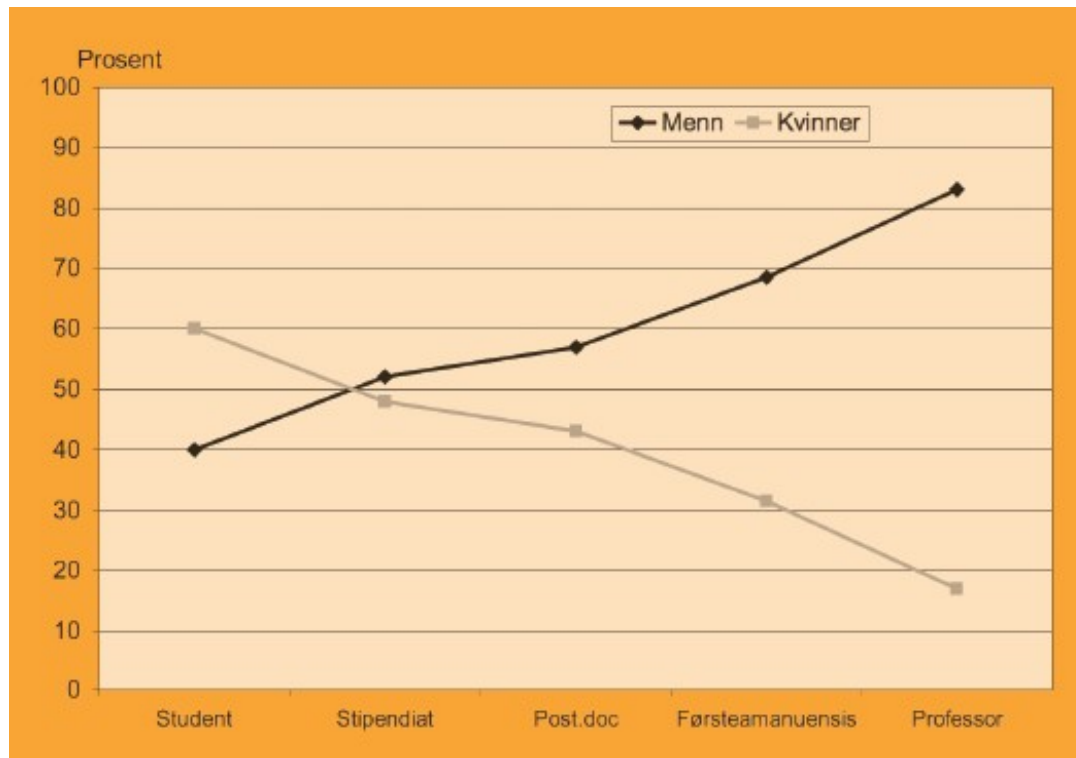
-Legislative body



Equal rights?



The National Union of
Students in Norway
Founded 1936

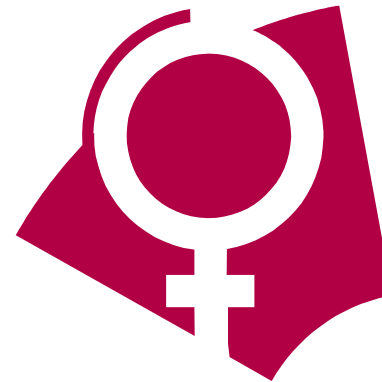
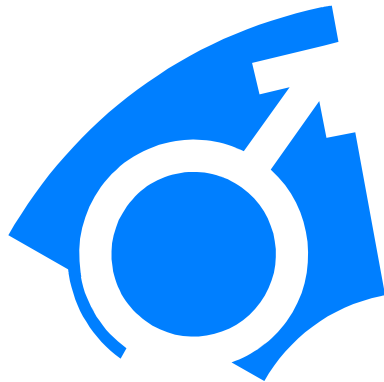


“- Education is a right, not a privilege!”

What is gender?



The National Union of
Students in Norway
Founded 1936



What are gender roles?



The National Union of
Students in Norway
Founded 1936



The Parsons model was used to contrast and illustrate extreme positions on gender roles. Model A describes total separation of male and female roles, while Model B describes the complete dissolution of barriers between gender roles. The examples are based on the context of the culture and infrastructure of the United States. However, these extreme positions are rarely found in reality; actual behavior of individuals is usually somewhere between these poles.



The National Union of
Students in Norway
Founded 1936

	Model A - Total role segregation	Model B - Total integration of roles
Education	Gender-specific education; high professional qualification is important only for the man	Co-educative schools, same content of classes for girls and boys, same qualification for men and women.
Profession	The workplace is not the primary area of women; career and professional advancement is deemed unimportant for women	For women, career is just as important as for men; Therefore equal professional opportunities for men and women are necessary.
Housework	Housekeeping and child care are the primary functions of the woman; participation of the man in these functions is only partially wanted.	All housework is done by both parties to the marriage in equal shares.
Decision making	In case of conflict, man has the last say, for example in choosing the place to live, choice of school for children, buying decisions	Neither partner dominates; solutions do not always follow the principle of finding a concerted decision; status quo is maintained if disagreement occurs.
Child care and education	Woman takes care of the largest part of these functions; she educates children and cares for them in every way	Man and woman share these functions equally.

What about the student democracy?



The National Union of Students in Norway
Founded 1936

NSU National board: 13 male 12 female

		Female	Male	Tot
NTNU	Speech	32		32
	Reply	32		32
UiB	Speech		38	38
	Reply		41	41
UMB	Speech	4	5	9
	Reply	3		3
UiTø	Speech	1	2	3
	Reply			0
UiO	Speech	11	34	45
	Reply	6	19	25
NSU-H	Speech		1	1
	Reply		1	1
NHHS	Speech		1	1
	Reply		1	1
UiS	Speech		7	7
	Reply		3	3
LS-TOTAL	Speech	35,3 %	64,7 %	136
	Reply	38,7 %	61,3 %	106

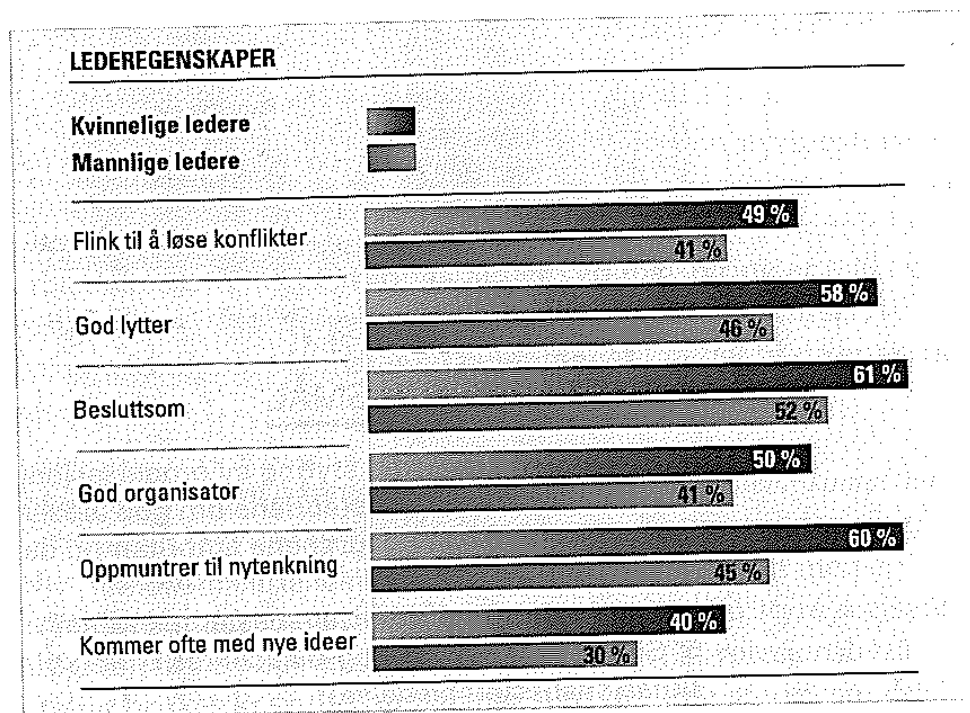
		Female	Male	Tot
KK	Speech		15	15
	Reply		11	11
AU	Speech	14	28	42
	Reply	13	20	33
Observ.	Speech	1	12	13
	Reply		14	14
Total	Speech	63	143	206
	Reply	54	110	164
Tot-%	Speech	30,6 %	69,4 %	
	Reply	32,9 %	67,1 %	

Leaders of the student democracy?



The National Union of
Students in Norway
Founded 1936

What makes a good leader?



In what style do you lead?



The National Union of Students in Norway
Founded 1936

	Masculin style	Feminine style
Work style	Competitive	Cooperative
Structure	Hierarchy	Group
Main goals	To win	Quality products
Method	Rational	Intuitive
Key elements	Total control Strategic Unsentimental Analytic	Less control Ability to intimate understanding Cooperation High demand of performance



The National Union of
Students in Norway
Founded 1936

www.nsu.no



The National Union of
Students in Norway
Founded 1936

www.nsu.no